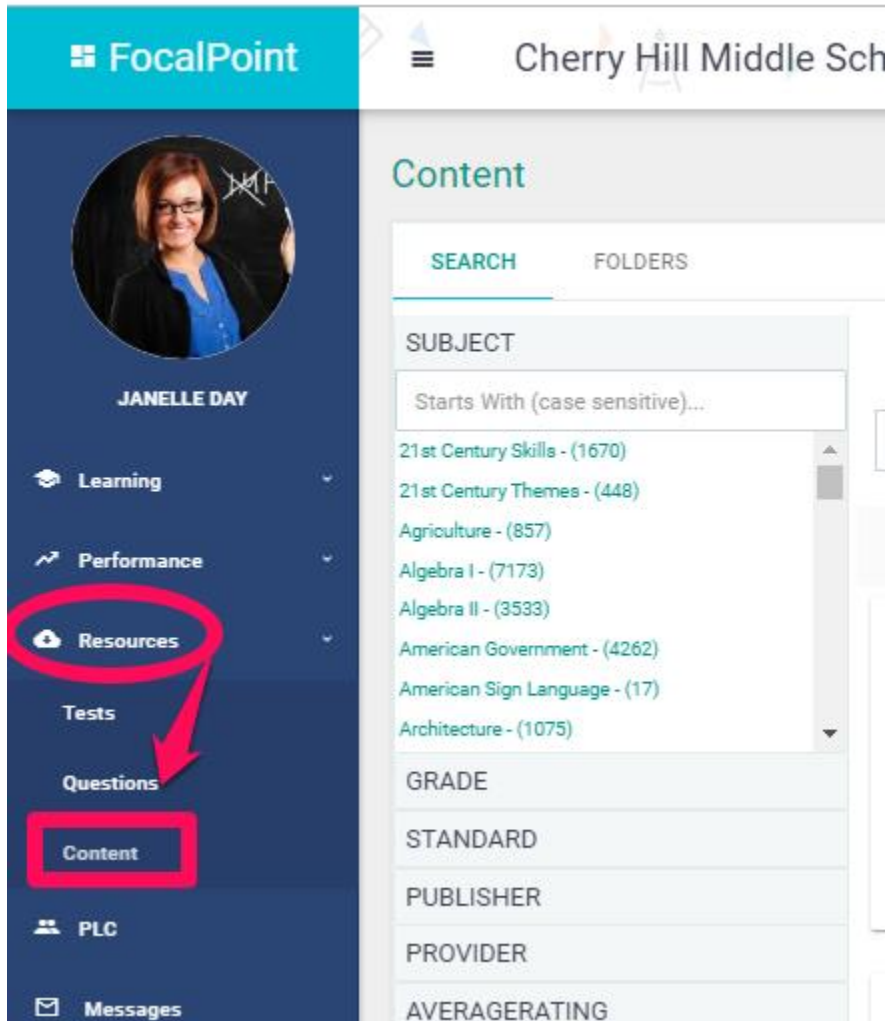


Essential Question: How do I find and assign digital content/resources?

How do I use the filters to find content?

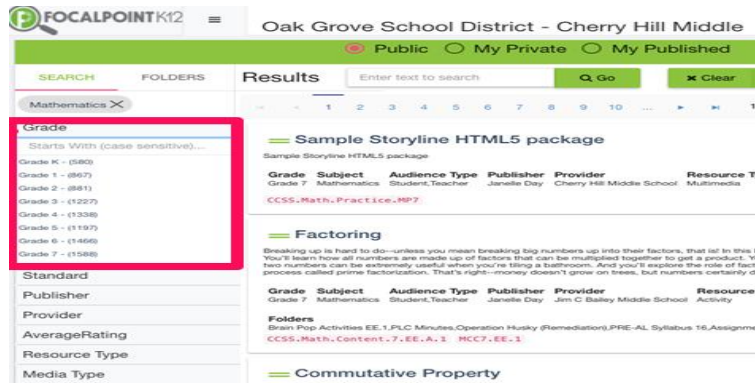
- ❑ Access the ContentCloud™ by clicking the 'Content Tab'.



- ❑ You now have access to the Digital Content Library containing approximately 50,000 open education resources from multiple providers. The resources are searchable using the filters located on the left side of the page using the 'Search' menu.

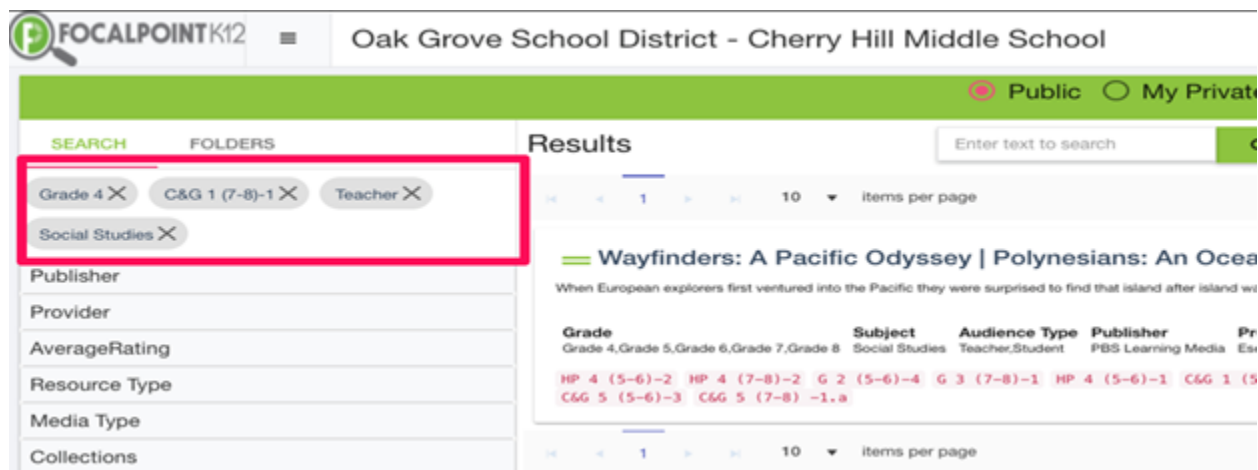


- To filter, click on the filter category you wish to use and select your desired choice(s). The filters being applied will be displayed at the top left side of the page. The example below illustrates filtering by 'Grade'.



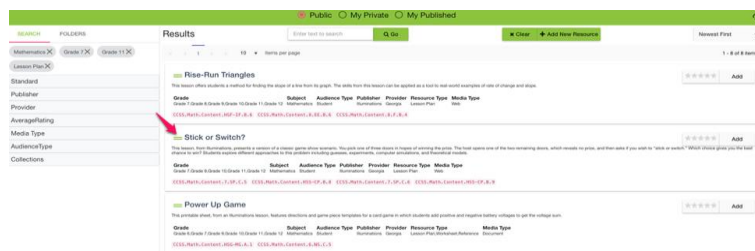
Note: You can close the filter category by clicking again on its name. Filters can be removed at any time by 'deselecting' the filter by clicking on the 'X' that appears beside the filtered criterion/criteria.

- The example below illustrates where a user has filtered for multiple categories. Again, filters can be removed at any time by 'deselecting' the filter by clicking on the 'X' that appears beside the filtered criterion/criteria.



How do I preview a resource?

- A high-level overview of the Digital Resource that includes the Title, Grade, Subject, Audience Type, Publisher, Provider, Resource Type, Media Type, Creator, and Folders is displayed on the main page. At any time, a user can preview the resource by clicking on the Resource Title. This will open a new tab in your browser.



- Clicking on the digital resource's title, will expand the resource allowing you to read details about it. Select the 'Launch' Tab, to fully preview the Digital Resource that is available in the ContentCloud™. For example . . .



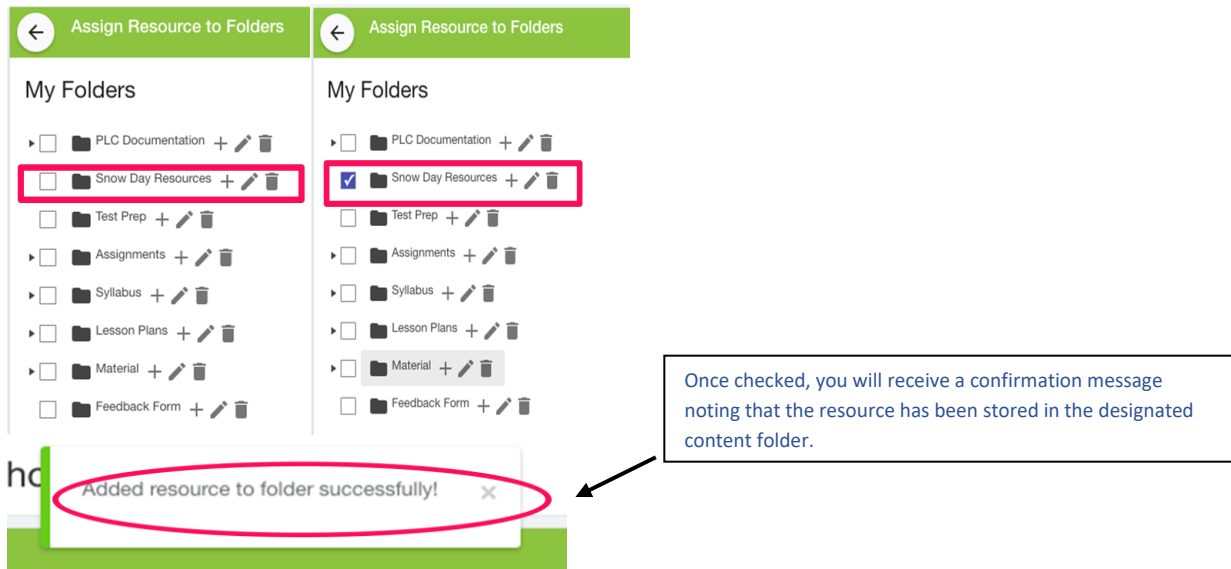
How do I add a resource to a folder?

#1: Selection from folder list

- Once you have completed your preview as described above and have found a digital resource you would like to use, it can be placed into a folder.
- To add a resource to a folder, click on the 'Add' tab located in the upper right corner of the resource.



- Your available folders will appear. Choose the folder(s) you would like to add the resource to and click on the box to the left of each folder.



- You can now return to the page where you began filtering and previewing resources by clicking the left arrow that appears in the upper left corner of the page.

#2: Drag & Drop

- Select the 'Folders' Tab at the top left side of the page. This shows all your folders on the left side of the page making it easy for you to drag and drop resources into selected folders. Click and hold the resource's title then drag the title into the desired folder.

Public My Private My Published

SEARCH FOLDERS

+ New Folder

Results

Enter text to search Q Go Clear Add New Resource Newest First

1 - 10 of 318 items

1 2 3 4 5 6 7 8 9 10 ... 10 items per page

Multiple units word problem: drug dosage (advanced) Edit Add

Future doctors and nurses out there, take note. This unit conversion word problem deals with converting drug dosage units, something that is commonly done in hospitals. Give it a try with us. Created by Sal Khan.

Grade	Subject	Audience Type	Publisher	Provider	Resource Type	Media Type	CreatedBy
Grades 9-12	Mathematics	Student,Teacher	Janelle Day	Cherry Hill Middle School	Video	URL	Janelle Day

CCSS.Math.Content.HSN-Q.A.1 CCSS.Math.Content.HSA-CED.A.1

Measurement word problem: running laps Edit Add

Sail solves a US customary distance word problem involving miles, yards, and feet. Created by Sal Khan, Monterey Institute for Technology and Education.

Grade	Subject	Audience Type	Publisher	Provider	Resource Type	Media Type	CreatedBy
Grades 9-12	Mathematics	Student,Teacher	Janelle Day	Cherry Hill Middle School	Video	URL	Janelle Day

CCSS.Math.Content.HSN-Q.A.1 CCSS.Math.Content.HSA-CED.A.1 CCSS.Math.Content.5.ND.A.1

Multiple units word problem: road trip Edit Add

Sal Khan word problem where he finds the cost of gas to go to the state capital. Both of the problems are... Created by Sal Khan.

- Once complete, you will receive a confirmation noting that the resources have been added to the folder.

Cherry Hill Middle School District - Cherry Hill Middle School

Resource has been added to PRE-AL Syllabus 16

Public

Results

Enter text to search Q Go

1 2 3 4 5 6 7 8 9 10 ... 10 items per page

TASC Module 5, Workshop 13